



YEOSHE®



YEOSHE
BEST CHOICE

YEOSHE HYDRAULICS TECHNOLOGY CO.,LTD.

Innovative Technology
Efficient Performance
Reliable Quality and Service

1

About YEOSHE 03

2

Excavator Hydraulic Piston Pump 05

• PA10VO63LA8DS-53R/VUC12N00	06
• PA10VSO71DFLR-31R/V*C42N00	
• Caterpillar 305 / 305.5E / 37E / 907	
• PA10VSO71DFLR/31R-VSC12K01-S2498+Gear pump	
• E-K3V63DTP10CR-0E02-A	07
• E-K3V112DTP1A9R-9T8L-V	
• E-K3V112DTP1A9R-9TCM-V	
• E-K3V112DTP1A9R-9T1L-V	
• E-K3V112DTP1K9R-YT6K-HV	08
• E-K3V112DTP159R-0E11-V	
• E-K3V112DTP1F9R-9Y14-HV	
• E-K3V112DT1CER-9C32	
• E-K3V112DT115R-HN0V	09
• E-K3V140DT1A7R-9T1L-BV	
• E-K5V140DTP109R-YT6K-HV	10
• E-K5V140DTP159R-0E01-AV	
• E-K5V160DTP1R9R-9Y04-V	
• E-K5V160DTH1X4R-9T16-BV	11
• E-K5V200DTH1X5R-9N0B-BV	
• E-PVK-2B-505-N-4191B	12
• E-PSVD2-27E-21	



3

Excavator Regulators

13

• KOBELCO Series	14
• SUMITOMO Series	
• KATO Series	15
• HITACHI Series	
• TAKEUCHI Series	
• VOLVO Series	
• Caterpillar Series	16
• CASE Series	
• JCB Series	
• DOOSAN Series	
• XCMG Series	17
• STRONG Series	
• HYUNDAI Series	18
• LIUGONG Series	
• SANY Series	19
• Zoomlion Series	

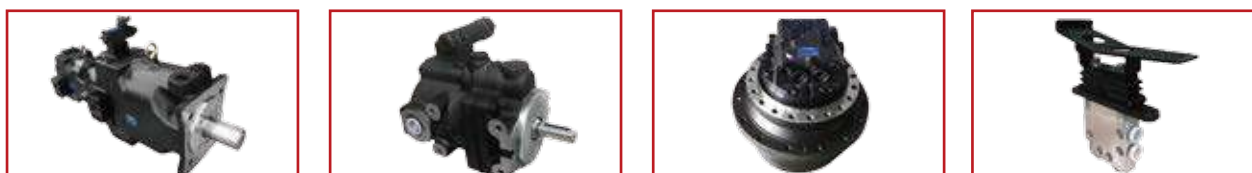


4

Other items

20

• Mobile Hydraulic Pump	21
• Paint Sprayer Hydraulic Pump	22
• Excavator Travel Motor	23
• Remote Control Valve	24



ABOUT YEOSHE

Founded in 1989, **YEOSHE** is a professional hydraulic manufacturer and designer of good-quality hydraulic pumps and machine in Taiwan. Endeavoring over 21 years, **YEOSHE** has established a reliable reputation in providing piston pump, gear & vane pump, hydraulic machine, power unit, hydraulic valve and others related components for both domestic and international markets.



YEOSHE



YEOSHE BEST CHOICE



YEOSHE

YEOSHE HYDRAULICS CO., LTD.

Innovative **T**echnology

Efficient **P**erformance

Reliable **Q**uality and **S**ervice

COMPANY PROFILE | YEOSHE

YEOSHE hydraulics supplier will keep on servicing global partners with Innovative Technology, Efficient Performance, Reliable Quality products and Trustworthy Service! Sincerely, **YEOSHE** invites you to be our loyal partners and enjoy our services immediately; we will offer more than what you expect.

Additionally, **YEOSHE** hydraulics manufacturer not only insists on the strict and precise quality control to achieve customer's satisfaction, but also adopts advanced machine to strengthen the competitiveness. All of processing and operating procedures have been certified with the ISO 9001-2008 (ISO Quality Assurance Certification which covering the quality, management, and market demands) to have a good knowledge of the market trends and meet the customer's needs.



YEOSHE HYDRAULICS CO., LTD.



YEOSHE BEST CHOICE

Following Improving Innovating



www.yeoshehydraulic.com

2

Excavator Hydraulic Piston Pump

PA10VO63LA8DS-53R/VUC12N00
PA10VSO71DFLR-31R/V*C42N00
Caterpillar 305 / 305.5E / 37E / 907
PA10VSO71DFLR/31R-VSC12K01-S2498+Gear pump
E-K3V63DTP10CR-0E02-A
E-K3V112DTP1A9R-9T8L-V
E-K3V112DTP1A9R-9TCM-V
E-K3V112DTP1A9R-9T1L-V
E-K3V112DTP1K9R-YT6K-HV
E-K3V112DTP159R-0E11-V
E-K3V112DTP1F9R-9Y14-HV
E-K3V112DT1CER-9C32
E-K3V112DT115R-HN0V
E-K3V140DT1A7R-9T1L-BV
E-K5V140DTP109R-YT6K-HV
E-K5V140DTP159R-0E01-AV
E-K5V160DTP1R9R-9Y04-V
E-K5V160DTH1X4R-9T16-BV
E-K5V200DTH1X5R-9N0B-BV
E-PVK-2B-505-N-4191B
E-PSVD2-27E-21



Excavator Hydraulic Piston Pump

YEOSHE



PA10VO63LA8DS-53R/VUC12N00

SANY SY-60 XCMG / YUCHAI
Hydraulic Pump / Single Pump

Model	Displacement (MI/r)	Working pressure (Mpa)	Max.pressure (Mpa)	Splined Shaft(T)	Weight (Kg)	Excavator (Ton)
PA10VO63	63	25	31	15	25	6~8



PA10VSO71DFLR-31R/V*C42N00

SANY SY-75 XCMG / DOOSAN / DAEWOO
Hydraulic Pump / Single Pump

Model	Displacement (MI/r)	Working pressure (Mpa)	Max.pressure (Mpa)	Splined Shaft(T)	Weight (Kg)	Excavator (Ton)
PA10VSO71	71	28	35	14 15	33	6~8

- Shaft code **S**:14Thread for SANY 6~8 ton excavator
- Shaft code **U**:15Thread for XCMG 6~8 ton excavator



CATERPILLAR 305 / 305.5E / 307E / 907

Excavator Hydraulic Pump

Model	Displacement (MI/r)	Working pressure (Mpa)	Max.pressure (Mpa)	Splined Shaft(T)	Weight (Kg)	Excavator (Ton)
358-500401	63	25	31	14	25	6~8
402-0183-01				15		
423-009702						
455-7947-00						



Excavator Hydraulic Piston Pump

YEOSHE



PA10VSO71DFLR/31R-VSC12K01-S2498+GEAR PUMP

DAEWOO DH80 / DOOSAN
Excavator Hydraulic Pump

Model	Displacement (MI/r)	Working pressure (Mpa)	Max.pressure (Mpa)	Splined Shaft(T)	Weight (Kg)	Excavator (Ton)
PA10VSO71	71	28	35	14 15	33	6~8



E-K3V63DTP10CR-0E02-A

KOBELCO SK115 / SK130-8
Excavator Hydraulic Pump

Model	Displacement (MI/r)	Working pressure (Mpa)	Max.pressure (Mpa)	Splined Shaft(T)	Weight (Kg)	Excavator (Ton)
E-K3V63DTP	63x2	35	40	14	90	12~16



E-K3V112DTP1A9R-9T8L-V

SANY SY215-8 / SY205-8

Excavator Hydraulic Pump

E-K3V112DTP1A9R-9TCM-V

KOBELCO SK200-6 / SK230-6 / SK235-6 /
SK250-6 / SANY SY215-6

Excavator Hydraulic Pump

E-K3V112DTP1A9R-9TEL-V

KOBELCO SK200-6E/SK230-6E/SK250-6E
Excavator Hydraulic Pump

Model	Displacement (MI/r)	Working pressure (Mpa)	Max.pressure (Mpa)	Splined Shaft(T)	Weight (Kg)	Excavator (Ton)
E-K3V112DTP	112x2	35	40	14	135	20~30

• The technical setting is for brand of excavator, please contact YEOSHE to know more.



Excavator Hydraulic Piston Pump

YEOSHE



E-K3V112DTP1K9R-YT6K-HV

KOBELCO SK200-8 / SK210-8 / SK250-8 /
SK260-8 Excavator Hydraulic Pump

Model	Displacement (MI/r)	Working pressure (Mpa)	Max.pressure (Mpa)	Splined Shaft(T)	Weight (Kg)	Excavator (Ton)
E-K3V112DTP	112x2	35	40	17	135	20~30



E-K3V112DTP159R-0E11-V

SANY SY215-8S / SY215-9
Excavator Hydraulic Pump

Model	Displacement (MI/r)	Working pressure (Mpa)	Max.pressure (Mpa)	Splined Shaft(T)	Weight (Kg)	Excavator (Ton)
E-K3V112DTP	112x2	35	40	14	135	20~30



E-K3V112DTP1F9R-9Y14-HV

SUMITOMO SH210-5 / SH240-5
CASE CX210 / 240
Excavator Hydraulic Pump

Model	Displacement (MI/r)	Working pressure (Mpa)	Max.pressure (Mpa)	Splined Shaft(T)	Weight (Kg)	Excavator (Ton)
E-K3V112DTP	112x2	35	40	14	135	20~30

• The technical setting is for brand of excavator, please contact YEOSHE to know more.



Excavator Hydraulic Piston Pump

YEOSHE



E-K3V112DTICER-9C32

HYUNDAI R210 / R215 / R225-7
Excavator Hydraulic Pump

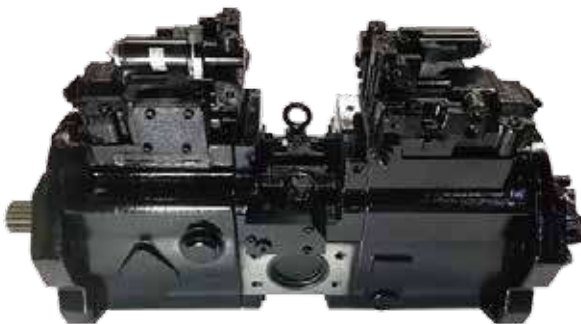
Model	Displacement (MI/r)	Working pressure (Mpa)	Max.pressure (Mpa)	Splined Shaft(T)	Weight (Kg)	Excavator (Ton)
E-K3V112DT	112x2	35	40	12	135	20~30



E-K3V112DT115R-HNOV

DAEWOO DH220-5
Excavator Hydraulic Pump

Model	Displacement (MI/r)	Working pressure (Mpa)	Max.pressure (Mpa)	Splined Shaft(T)	Weight (Kg)	Excavator (Ton)
E-K3V112DT	112x2	35	40	12	135	20~30



E-K3V140DT1A7R-9T1L-BV

SANY SY285-8
Excavator Hydraulic Pump

Model	Displacement (MI/r)	Working pressure (Mpa)	Max.pressure (Mpa)	Splined Shaft(T)	Weight (Kg)	Excavator (Ton)
E-K3V140DT	140x2	35	40	17	180	30~36

• The technical setting is for brand of excavator, please contact YEOSHE to know more.



Excavator Hydraulic Piston Pump

YEOSHE



E-K5V140DTP109R-YT6K-HV

KOBELCO SK330-8/SK350-8
Excavator Hydraulic Pump

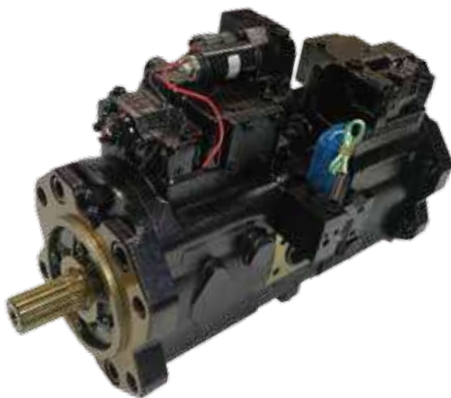
Model	Displacement (MI/r)	Working pressure (Mpa)	Max.pressure (Mpa)	Splined Shaft(T)	Weight (Kg)	Excavator (Ton)
E-K5V140DTP	140x2	35	40	17	145	28~35



E-K5V140DTP159R-0E01-AV

SANY SY235-9/SY265-9
Excavator Hydraulic Pump

Model	Displacement (MI/r)	Working pressure (Mpa)	Max.pressure (Mpa)	Splined Shaft(T)	Weight (Kg)	Excavator (Ton)
E-K5V140DTP	140x2	35	40	17	145	28~35



E-K5V160DTP1R9R-9Y04-V

SUMITOMO SH350 / CASE CX360
Excavator Hydraulic Pump

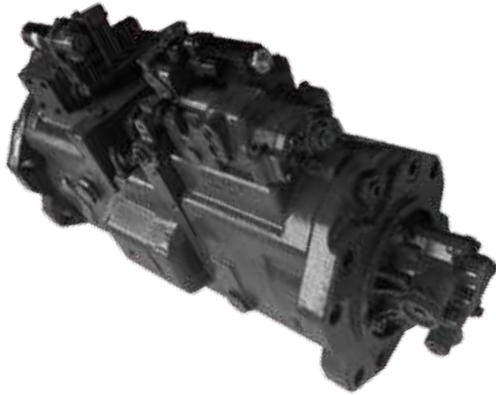
Model	Displacement (MI/r)	Working pressure (Mpa)	Max.pressure (Mpa)	Splined Shaft(T)	Weight (Kg)	Excavator (Ton)
E-K5V160DTP	160x2	35	40	13	210	33~38

• The technical setting is for brand of excavator, please contact YEOSHE to know more.



Excavator Hydraulic Piston Pump

YEOSHE



E-K5V160DTH1X4R-9T16-BV

SANY SY335 / SY365
Excavator Hydraulic Pump

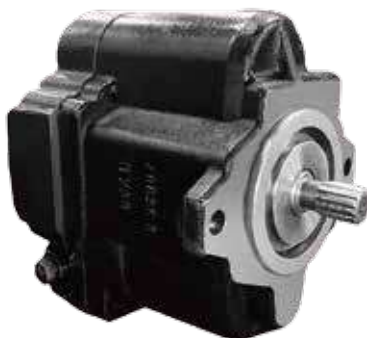
Model	Displacement (MI/r)	Working pressure (Mpa)	Max.pressure (Mpa)	Splined Shaft(T)	Weight (Kg)	Excavator (Ton)
E-K5V160DTH	160x2	35	40	17	210	33~38



E-K5V200DTH1X5R-9N0B-BV

SANY SY335 / SY365 / SY385
Excavator Hydraulic Pump

Model	Displacement (MI/r)	Working pressure (Mpa)	Max.pressure (Mpa)	Splined Shaft(T)	Weight (Kg)	Excavator (Ton)
E-K5V200DTH	200x2	35	40	17	220	42~48



E-PVK-2B-505-N-4191B

NACHI PVK Series Hydraulic Pump

Model	Displacement (MI/r)	Maximum speed (Rpm)	Max.pressure (Mpa)	Splined Shaft(T)	Weight (Kg)	Excavator (Ton)
E-PVK-2B-505-N-4191B	50	2400	24.5	13	22	4~5

• The technical setting is for brand of excavator, please contact YEOSHE to know more.



Excavator Hydraulic Piston Pump

YEOSHE



(without solenoid)

E-PSVD2-27E SERIES

YANMAR VIO50 / HITACHI ZX40
LIUGONG LG906C / ISHIKAWAJIMA IHI60
Excavator Hydraulic Pump



(with two solenoid valve)



(with three solenoid valve)

Model	Displacement (MI/r)	Rated pressure (bar)	Maximum torque (N.m)	Splined Shaft(T)	Weight (Kg)	Excavator (Ton)
E-PSVD2-17E-17-0055	17x2	250	85.3	17	23	2.5~3.5
E-PSVD2-17E-12-0056						
E-PSVD2-17E-17-0056						
E-PSVD2-21E-17-0000	21x2	250	122.6	13	26	3.5~4.5
E-PSVD2-21E-17-0056						
E-PSVD2-27E-17-0000	27x2	250	140.2	13	36	4.5~6.0
E-PSVD2-27E-17-0055						
E-PSVD2-27E-17-0057						

• The technical setting is for brand of excavator, please contact YEOSHE to know more.

3

Excavator Regulators

KOBELCO Series
SUMITOMO Series
KATO Series
HITACHI Series
TAKEUCHI Series
VOLVO Series
Caterpillar Series
CASE Series
JCB Series
DOOSAN Series
XCMG Series
STRONG Series
HYUNDAI Series
LIUGONG Series
SANY Series
Zoomlion Series



9T Series



0E Series



YT Series



9N Series



HN Series



Other Series

KOBELCO Series

	Regulator Model	Application Pump	Excavator Type
1	6-0E02 (K3V)	K3V63DTP	SK130/135
2	6-0E23 (K7V)	K7V63DTP	SK135-8/140-8/130-8
3	6-0E13 (K7V)	K7V63DTP	SK135-8/140-8/130-8
4	8-0E02	K5V80DTP	SK135-11
5	G-9T1L	K3V112DTP	SK200-6 Old type
6	G-9TBR	K3V112DTP	SK200-6 New type /SK230-6/SK235-6/250-6
7	G-9TBL	K3V112DTP	SK200-6New type/SK230-6/SK235-6/250-6
8	G-9TCM	K3V112DTP	SK200-6New type/SK230-6/SK235-6/250-6
9	G-9TDL	K3V112DTP	SK200-6New type/SK230-6/SK235-6/250-6
10	G-9TEL	K3V112DTP	SK200-6E/SK230-6E
11	G-YT0K	K3V112DTP	SK200-8/210-8/250-8/260-8
12	G-YT6K	K3V112DTP	SK200-8/210-8/250-8/260-8
13	G-9TBS	K5V140DTP	SK330-6
14	S-9TCM	K5V140DTP	SK330-6
15	G-9TBR	K3V112DTP	SK330-6E
16	S-9T1L	K5V140DTP	SK330-6E
17	S-YT0K	K5V140DTP	SK330-8/SK350-8
18	S-YT6K	K5V140DTP	SK330-8/SK350-8
19	S-0EZ1	K5V140DTP	SK330
20	H-9C06	K3V180DT	SK400-2
21	H-9TOV	K3V180DTH	SK450-6/-6E
22	D-YT0K	K5V200DPH	SK460-8



SUMITOMO Series

	Regulator Model	Application Pump	Excavator Type
1	G-9C12	K3V112DT	SH200-1
2	G-9N49	K3V112DTP	SH200A3
3	G-9Y14 (Front pump with solenoid)	K3V112DTP	SH210-5/SH240-5
4	G-9X14 (Rear pump without solenoid)	K3V112DTP	SH210-5/SH240-5
5	S-9Y15 (Front pump with solenoid)	K5V140DTP	SH290-5
6	S-9X15 (Rear pump without solenoid)	K5V140DTP	SH290-5
7	S-9N0A	K5V140DTP	SH300A3
8	K-9Y04 (Front pump with solenoid)	K5V160DTP	SH350-5/SH300-5
9	K-9X04 (Rear pump without solenoid)	K5V160DTP	SH350-5/SH300-5
10	K-9Y14 (Front pump with solenoid)	K5V160DTP	SH350-5/SH300-5
11	K-9X14 (Rear pump without solenoid)	K5V160DTP	SH350-5/SH300-5
12	H-9Y0A (Front pump with solenoid)	K3V180DTP	SH450-5
13	H-9N0A (Rear pump without solenoid)	K3V180DTP	SH450-5

KATO Series

	Regulator Model	Application Pump	Excavator Type
1	6-9N14 (Front pump with solenoid)	K3V63DT	HD512
2	6-9N04 (Rear pump with solenoid)	K3V63DT	HD512
3	G-9N1A	K3V112DT	HD700-7/HD820-1/2/3
4	G-9N5A	K3V112DT	HD1023III
5	H-9N1A	K3V180DT	HD1250
6	H-9N15	K3V180DT	HD1430
7	H-9N0A (Front pump without solenoid)	K3V180DTH	HD2045
8	H-9N2S (Rear pump with solenoid)	K3V180DTH	HD2045

HITACHI Series

	Regulator Model	Application Pump	Excavator Type
1	H-0E11	K3V180DTH	EX400-3/400-5
2	D-0E11	K5V200DP	ZX450-1 GDI
3	D-0E02	K5V200DP	ZX470-3 FAI
4	D-0E43	K5V200DPH	ZX450/470
5	D-0E23	K5V200DP	ZX850/870

TAKEUCHI Series

	Regulator Model	Application Pump	Excavator Type
1	6-9COS	K3V63DTP	TB135



VOLVO Series

	Regulator Model	Application Pump	Excavator Type
1	6-9N09 (K3V)	K3V63DT	EC140
2	8-9N61	K5V80DT	EC170
3	G-9N24	K3V112DT	EC210/EC240/EC210B
4	G-9NE2E-1V	K3V112DT-1VJR-9N2E-1V	EC210D
5	H-9N04	K3V140DT	EC290
6	H-9N29	K3V140DT	EC290
7	K-1E06-V	K5V160DT-158R-1E06-V	EC350D
8	H-9N56	K3V180DT	EC360
9	H-9N05	K3V180DTP	EC360
10	H-9N4A (Front pump without solenoid)	K3V180DTH	EC460
11	H-9N2B (Rear pump with solenoid)	K3V180DTH	EC460
12	K-9N0A (Front pump without solenoid)	K5V200DTH	EC460
13	K-9N0B (Rear pump with solenoid)	K5V200DTH	EC460
14	K-9N0A (Front pump without solenoid)	K5V200DTH	EC480
15	K-9N0Y (Rear pump with solenoid)	K5V200DTH	EC480
16	H-9N46	K3V180DT	MX14/352
17	G-9N34	K3V112DTP	MX175W/EW170

Caterpillar Series

	Regulator Model	Application Pump	Excavator Type
1	DZN3X	K5V160DPH	E330D/E336D
2	K-9N17 (Front pump without solenoid)	K5V200DTH	E336
3	K-9N1H (Rear pump with solenoid)	K5V200DTH	E336

CASE Series

	Regulator Model	Application Pump	Excavator Type
1	G-9Y14	K3V112DTP	CX210/240
2	G-9X14	K3V112DTP	CX210/240
3	S-9N01	K5V140DTP	CX360
4	K-9Y04	K5V160DTP	CX360
5	K-9X04	K5V160DTP	CX360

JCB Series

	Regulator Model	Application Pump	Excavator
1	G-9C79	K3V112DTP	JS200/210/220/240



DOOSAN Series

	Regulator Model	Application Pump	Excavator Type
1	6-HNOV	K3V63DT	DH120/DH150/S130
2	8-HNOV	K5V80DTP	DH150-9
3	G-9N02	K3V63DT	S170
4	G-9C02	K3V112DT	S220
5	G-HN0V	K3V112DT	DH220-5
6	G-9N1T	K3V112DTP	DX225
7	G-HN2M	K3V112DTP	DX225-9
8	G-HN1F	K3V112DTP	DH258
9	G-9NM9	K3V112DTP	DX260
10	H-9N09	K5V80DTP	DH280/S280
11	H-HNOV	K3V140DT	S290
12	H-HNOV	K3V180DTH	DH300-5
13	S-9N01	K5V140DTP	S300
14	S-9N01	K5V140DTP	DH300-7
15	S-9N07	K5V140DTP	DX300
16	H-HN0P	K3V180DT	DH320
17	H-HN2V	K3V180DT	S360
18	D-ZN7X	K5V160DP	DH370-9

XCMG Series

	Regulator Model	Application Pump	Excavator Type
1	6-9N09	K3V63DT	XE150
2	G-9NC9	K3V112DT	XE195/210/215/230/240
3	S-9N25	K5V140DTP	XE260/XG330
4	H-9N09	K3V180DT	XE335C
5	K-9N4A (Front pump without solenoid)	K5V200DTH	XE370C2/C3
6	K-9N4B (Rear pump with solenoid)	K5V200DTH	XE370C2/C3
7	K-9N09 (Front pump without solenoid)	K5V200DTH	XE450/470C3/490
8	K-9N0H (Rear pump with solenoid)	K5V200DTH	XE450/470C3/490

STRONG Series

	Regulator Model	Application Pump	Excavator Type
1	6-9N23 (Front pump without solenoid)	K7V63DTP	JCM913D
2	6-9N0E (Rear pump with solenoid)	K7V63DTP	JCM913D
3	6-9N14	K3V63DT	JCM-15T



HYUNDAI Series

	Regulator Model	Application Pump	Excavator Type
1	6-9COS	K3V63DT	R130-7/R140-7
2	6-9C02-V	K3V63DT	R130-5/150
3	6-9C22	K3V63DT	R130/150
4	8-9N05	K5V80DTP	R130
5	8-9C01	K5V80DTP	R140
6	8-9PA2	K5V80DT	R140LC
7	8-9N61	K5V80DT	R150-9
8	8-9C05	K5V80DTP	8-9C05
9	G-9S09	K3V112DP	R210-7
10	G-9N3P	K3V112DT	R215-7
11	G-9P12	K3V112DTP	R215-9
12	G-9C32	K3V112DT	R210-7/220-7/225-7
13	G-9C36	K3V112DT	R225-7
14	H-9N29	K3V140/180DT	R280K/R290LC-3
15	H-9C12	K3V140DT	R290-7
16	H-9C79	K3V180DT	R300-5
17	H-9N39	K3V140DT	R300/320/330
18	S-9P12	K5V140DTP	R300LC
19	S-9C12	K5V140DTP	R300-7/R305LC-7
20	S-9N12	K5V140DTP	R305-7
21	H-9N69	K3V180DT	R320-3
22	H-9C69	K3V180DT	R320-7/335-7
23	D-9NE4	K5V200DPH	R450
24	K-9C0A (Front pump without solenoid)	K5V200DTH	R455
25	K-9C0B (Rear pump with solenoid)	K5V200DTH	R455

LIUGONG Series

	Regulator Model	Application Pump	Excavator Type
1	6-9N29	K3V63DT	LG919
2	G-9N94	K3V112DT	LG922
3	G-2N59	K3V112DT	LG230
4	G-9NE4	K3V112DT	LG925
5	G-9N64	K3V112DT	LG925
6	H-9N34	K3V140/180	LG933
7	S-9N25	K5V140DTP	LG30T



SANY Series

	Regulator Model	Application Pump	Excavator Type
1	6-0E13 (K7V)	K7V63DTP	SY135
2	6-0E23 (K7V)	K7V63DTP	SY135
3	6-9N29	K3V63DT	SY135
4	6-9POH	K3V63DT	SY135-8
5	G-9TCM	K3V112DTP	SY205/215 Negative flow control
6	G-9TBL	K3V112DTP	SY215 Negative flow control
7	G-9TBR	K3V112DTP	SY215-6 Negative flow control
8	G-0E11	K3V112DTP	SY205/SY215-8S/SY215-9
9	G-9T8L	K3V112DTP	SY215-8
10	S-9TBR	K5V140DTP	SY235-6/SY265-6 Negative flow control
11	S-9T1L	K5V140DTP	SY235-8/SY265-8
12	S-0E02	K5V140DTP	SY235-9/SY265-9
13	S-0E01	K5V140DTP	SY235-9/SY265-9
14	H-9T1L	K3V140DT	SY285
15	H-9TCM	K3V140DT	SY330/360 Negative flow control
16	K-9T06	K5V160DTH	SY335
17	K-9T16	K5V160DTH	SY335
18	K-9N17 ^(Front pump without solenoid)	K5V200DTH	SY335/SY365-8/SY385
19	K-9N1H ^(Rear pump with solenoid)	K5V200DTH	SY335/SY365-8/SY385

Zoomlion Series

	Regulator Model	Application Pump	Excavator Type
1	6-9N23 (Front pump without solenoid)	K7V63DTP	ZE150E
2	6-9N0E (Rear pump with solenoid)	K7V63DTP	ZE150E
3	G-9N94	K3V112DT	ZE205/210/230/260

4

Other items

Mobile Hydraulic Pump
Paint Sprayer Hydraulic Pump
Excavator Travel Motor
Remote Control Valve



◆ **PV SERIES**

Displacement 16cc~270cc
Pressure max. 350 bar



◆ **Technical Data**

· Please contact YEOSHE to know more technical setting.



◆ PVS-OB-8/10 Hydraulic Pump

Displacement 8cc~10cc for paint sprayer



◆ Technical Data

Model	Displacement (cm ³ /rev)	No-load Displacement (l/min)				Pressure adjusting Mpa(kgf/cm ²)	Pressure Peak Mpa(kgf/cm ²)	Rotation Speed min ⁻¹		Weight (Kg)
		1000 min ⁻¹	1200 min ⁻¹	1500 min ⁻¹	1800 min ⁻¹			Min.	Max.	
PVS08A1 PVS08A2 PVS08A3 PVS08A4	8.0	8.0	9.6	12.0	14.4	2~03.5 (20.4~35.7) 2~07 (20.4~71.4) 3~14 (30.6~143) 3~21 (30.6~214)	25(255)	500	2000	7.7
PVS10A1 PVS10A2 PVS10A3 PVS10A4	10	10	12	15.0	18					

• Please contact YEOSHE to know more technical setting.



◆ GM18



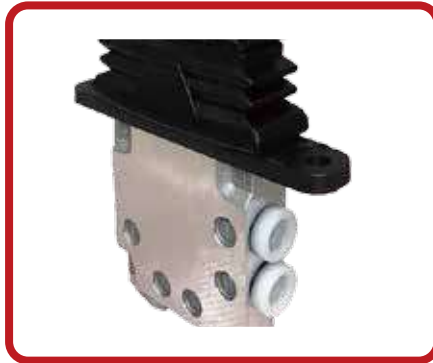
◆ Technical Data

Model	Displacement (MI/r)	Working pressure (Mpa)	Rotation	Gear Ratio	Weight (Kg)	Excavator (Ton)
GM18	53/34	28	R/L	1/53.705	90	6~8

• Please contact YEOSHE to know more technical setting.



◆ E-PV6P



◆ Technical Data

It's applied to the clamp and bolt cutter of excavator.

- Please contact YEOSHE to know more technical setting.



YEOSHE BEST CHOICE

油聖液壓科技有限公司
YEOSHE HYDRAULICS TECHNOLOGY CO.,LTD.



413 臺灣台中市霧峰區霧工一路68號

No.68, Wugong 1st Rd., Wufong Dist., Taichung City, Taiwan, 413

TEL : +886-4-23332339 FAX : +886-4-23333817 E-mail : yeoshe@yeoshe.com.tw

東莞辦事處 Dongguan TEL : +86-769-85965158 FAX : +86-769-81635359 E-mail : yeoshe@yeoshe.com.tw

上海辦事處 Shanghai TEL : +86-21-69785786 FAX : +86-21-69785787 E-mail : yeoshe@yeoshe.com.tw

經銷商 Distributor

www.yeoshehydraulic.com



版權所有 翻印必究
Copyright © 2019 by YEOSHE